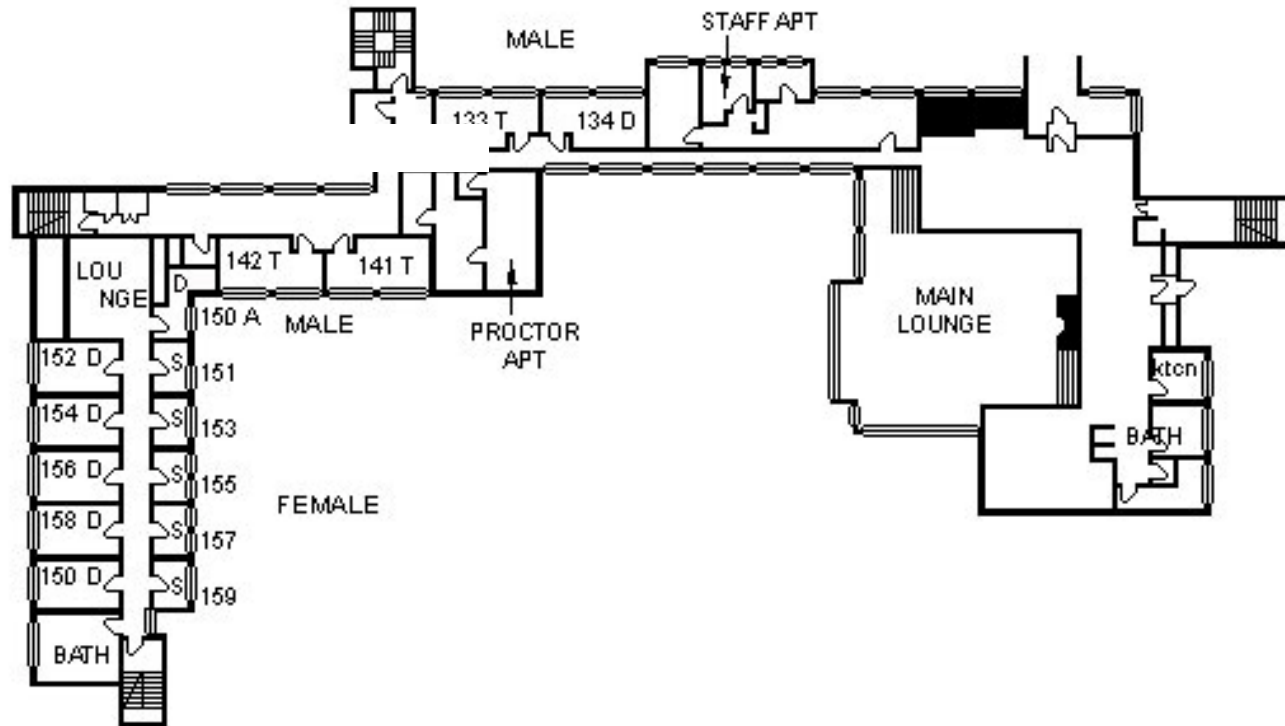


# Lewis Hall

## First Floor Plan

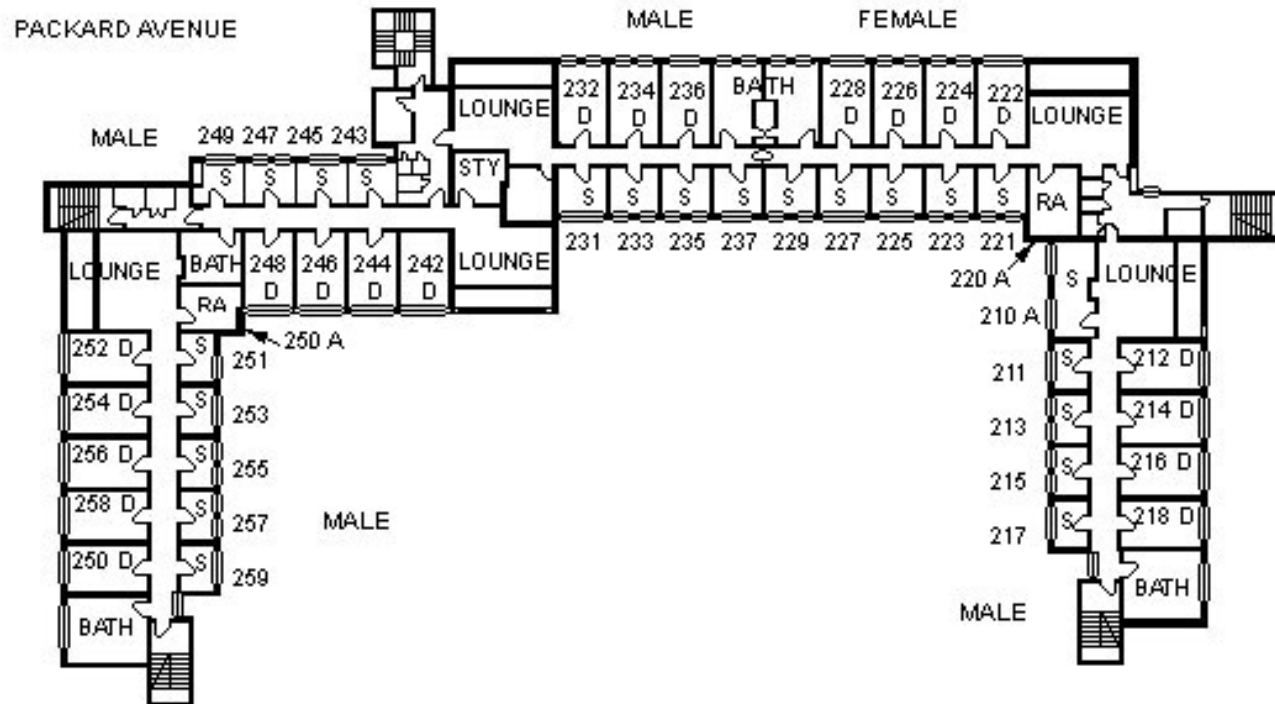


S -- SINGLE -- 9.5' X 11'  
D -- DOUBLE -- 11' X 18'  
T -- TRIPLE  
STY -- STUDY ROOM  
kten -- KITCHEN

\*\*\*Please Note\*\*\*  
All measurements are approximate

# Lewis Hall

## Second Floor Plan

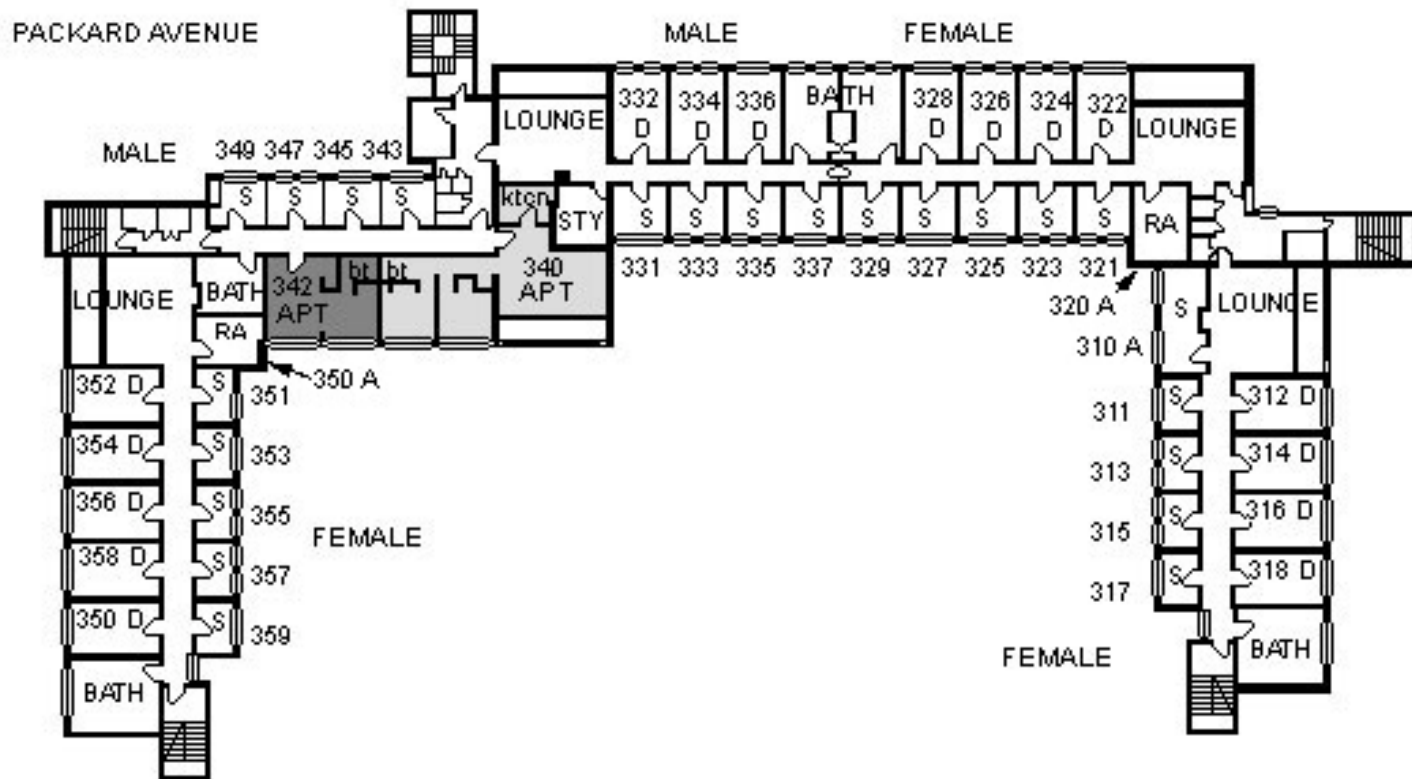


S -- SINGLE -- 9.5' X 11'  
D -- DOUBLE -- 11' X 18'  
STY -- STUDY ROOM

\*\*\*Please Note\*\*\*  
All measurements are approximate

# Lewis Hall

## Third Floor Plan

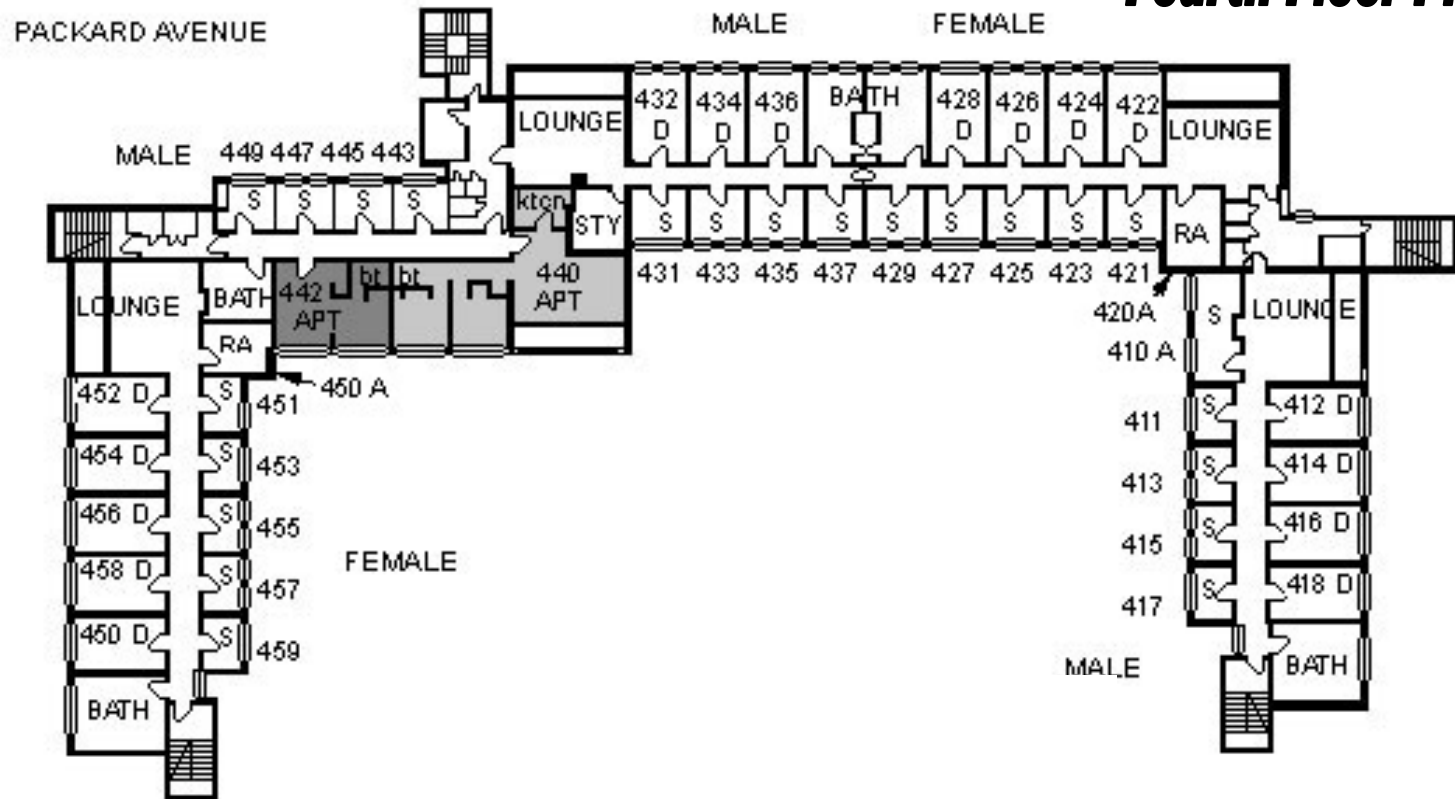


- S -- SINGLE -- 9.5' X 11'
- D -- DOUBLE -- 11' X 18'
- STY-- STUDY ROOM
- kten -- KITCHEN
- bt-- BATHROOM
- \* 342 -- 2 PERSON APT
- \* 340 -- 4 PERSON APT

\*\*\*Please Note\*\*\*  
All measurements are approximate

# Lewis Hall

## Fourth Floor Plan



- S -- SINGLE -- 9.5' X 11'
- D -- DOUBLE -- 11' X 18'
- STY -- STUDY ROOM
- kton -- KITCHEN
- bt -- BATHROOM
- \* 442 -- 2 PERSON APT
- \* 440 -- 4 PERSON APT

\*\*\*Please Note\*\*\*  
All measurements are approximate