

**Here's what you'll find when you arrive:**

*Each student is provided with the following of items*

- A bed – Your bed is a twin “extra-long” (36” x 80”)
- A desk and chair
- A closet or wardrobe
- A chest of drawers
- An RJ-45 Ethernet data connection jack (per student)

**You will also find:**

- Window shades and screens
- Smoke detectors
- Ceiling light fixture(s)
- One telephone jack
- One cable television jack (coaxial)

**Some Notes:**

If you and your roommate(s) would like to have a combination microwave and refrigerator in your room, you may rent a “Microfridge” from **Tufts Student Resources**. They may be contacted at (617) 627-3224. You will receive information from TSR regarding this and other offers.

Questions regarding furniture or the room itself may be directed to Residential Facilities (617) 627-3992.

Questions regarding meal plans should be directed to Dining Services (617) 627-3566.

Questions regarding telephone service should be directed to the Help Desk at (617) 627-4357 (campus ext. 7-HELP).

Questions regarding data connections and cable TV should be directed to Tufts On Line at (617) 627-4865. (campus ext. 7-4TOL).

**The “Things to Bring” List:**

- A power strip
- An alarm clock
- A fan (rooms are not air conditioned)
- Some quarters (laundry, vending)
- A tote for soap, shampoo, etc.
- Towels (hey, sometimes students forget)
- A desk light (not halogen)
- A telephone (decide with your roommate(s) who will be bringing this)
- A stereo and television (again, consult with roommate(s))
- A hand vacuum (small) or broom (common spaces are cleaned... not your room)
- Headphones



**Shedding Some Light on the Things to Bring...**

Tufts University Office of Residential Life  
(617) 627-3248



# and the things to leave at home!



Your assigned room at Tufts will serve as your home while on campus. These guidelines are informed by four basic goals: safety, comfort, building preservation and community building.

We at Residential Life intend for your experience in your residence hall to be as enjoyable as possible. Each of the policies we draft is specifically intended to prevent disturbance or emergency. However, no list of rules replaces your mature judgement.

We depend upon your respect and compassion for your neighbors as well as your common sense to ensure the quality of life for all residents.

For complete information and description of Residential Life and Learning's policies, see our online version of **Habits**.

<http://www.ase.tufts/reslife>

Glow-in-the-dark ceiling/wall accessories are not permitted

Dartboards are explicitly prohibited

The alteration of any electrical fixture is prohibited

You may not make holes in the walls, floor, or ceiling for any reason (including shelving). Only adhesive plastic gum may be used to hang posters, etc.

Weapons are not permitted

Wall hangings may not obstruct electrical or lighting fixtures

Open flames and incense are prohibited

Cinder blocks, and lofts are prohibited

Drawing and painting on school property is prohibited

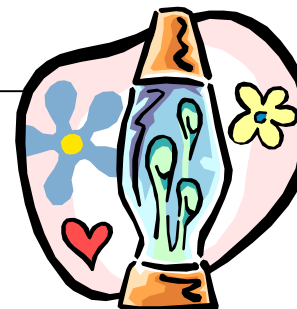
Cooking appliances (hotpots, microwaves included) are not allowed for use in your room

## The "Leave-at-Home" List *Dangerous items like:*

Explosives, hazardous and toxic stuff, weapons, candles, incense, motorbike flammable substances, all halogen Lights, & multi-armed lamps

## *Miscellaneous items:*

Excessively loud speakers/amplifiers  
Air conditioners  
Cooking appliances  
Microwaves  
Grills



## However, the following are allowed.....

- Small cube refrigerators (2-4 amps preferably)
- Floor rugs
- Floor lamps (incandescent or fluorescent only)